

CARSHALTON JOLLY BOYS 20th July 2017

GETTING THERE

From Victoria (28 mins) 00.17 & 00.47 Plats 9-12, EPSOM train, **NOT** via Norbury. (Plat 15 at Clapham Jct. 7 mins later)

From St P Intnl (43 mins) 08.44, 09.16, then 00.48 & 00.18, SUTTON via Mitcham Jcn, **NOT** via Wimbledon

TRAINS HOME

To Victoria (28 mins) 00.02 & 00.32, St Pancras Intnl at 00.11 & 00.41

Allow **at least** 5 minutes from The Railway Tavern to the Up Platform

6 The Railway Tavern
Optional "one for the road"

2 The Sun
11.00 – 11.50

5 The Hope
13.00 -

1 The Racehorse
10.00 – 10.50
Bacon butties, coffee and earlies

Buses from Whispering Moon in Wallington

Buses 407 & X26 from West Croydon and Kingston

3 The Woodman
11.55 – 12.30

4 The Greyhound
12.35 – 12.55

154 Bus Morden to Croydon

Carshalton Beeches Station
500 yards (uphill) or 154 bus (one stop) for trains to West Croydon [6 per hour]

There is only one entrance/exit at Carshalton Station. If you are going to The Racehorse for breakfast (and I hope you are), turn right out of the station and head into West Street. If The Sun is your first port of call, turn left out of the station into North Street.

For Wetherspoon enthusiasts, the closest is at WALLINGTON, just outside the station, on the line from West Croydon to Sutton (Victoria to Epsom via Norbury and Victoria to Epsom Downs). Afterwards, join a 127 or 157 bus from the opposite side of the road from the Whispering Moon for the 8 minute trip to the stop, Carshalton Ponds, indicated above, 75 yards shy of The Sun. They run every few minutes.

Following our successful trip to Carshalton back in 2015, it was suggested that we could do a repeat. So, here we go! It is a local suburb within the London Borough of Sutton. Part of

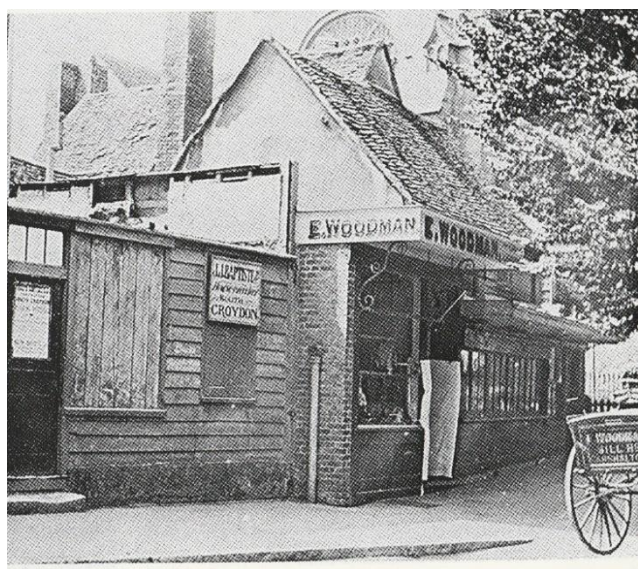


Surrey until 1965, it is located 10 miles from Charing Cross, and is famed for one of the two sources of the River Wandle being in Carshalton Ponds in the centre of the

village. The Wandle is a tributary of the Thames, joining it at Wandsworth (gettit?), the home of the now defunct Young's Ram Brewery. Carshalton is also well known for its lavender fields, above. Carshalton consists of a number of neighbourhoods, but the main focal point, Carshalton Village, a pub lover's paradise, is visually scenic and picturesque and is the part we will be visiting. At its centre are the two adjoining ponds, which are overlooked by the Grade II listed All Saints Church on the south side, and the Victorian Grove Park on the north side. The Grade II listed Honeywood Museum sits on the west side, just a few yards from the water.

We will again start at **The Racehorse**, where John and Maura have kindly agreed to open up at **10.00** to enable us to enjoy bacon butties, tea or coffee, and maybe a beer or two. There is no JDW close by, so I would urge you give John and Maura your support. We move off at 10.50 to be at **The Sun** in North Street at **11.00** where Jo has agreed to open early especially for us.

Following a long period of closure, The Sun is now a boutique-style pub that sells a number of well-kept and unusual (for London) beers, and has a reputation for serving fine food and community involvement. We move on at 11.50 to walk through Grove Park to **The Woodman Wine Bar**, arriving at about **11.55**.



This is quite small and gets very crowded in the evenings and is one of the oldest buildings in Carshalton, being a former butchers shop dating from the 16th century owned by E. Woodman, hence the name and the pigtail hooks outside for hanging the sides of beef. The Manager, Michael, generally has two guest beers, and will be ready for us as we arrive.

We leave here at **12.30** and head across the front of All Saints Church to **The Greyhound** ahead of us for a fleeting visit. This is included principally because it is a fine looking building in a super location (see picture, right), a former Youngs pub, now

a hotel, selling the usual Bedford Ales. After a (very) swift half, we'll cut back across the road, across the front of the Honeywood Museum, then turning left past the grounds of



the Ecology Centre into Festival Walk. Note the plaque for the tallest London plane tree in Great Britain (123ft in 1964) as we pass. We head towards the Grade II* listed early 18th century Water

Tower (or Bagnio as it was known at the time) built primarily to house a water driven pump supplying water to Carshalton House (now St Philomena's School) and the fountains in its gardens. It was planned as a multi-purpose building, and also contains an orangery, a saloon and a bathroom which retains original Delft tiles, pictured here. We turn right into West Street, back past the Racehorse on our left to arrive at **The Hope**, the highlight of the tour, at **13.00**.



In 2010 there was an imminent danger of the pub closing and becoming a licensed Indian Restaurant, but after some quick negotiation by a group of customers, were given the option of buying the lease and operating the pub.

A company "48 West Limited" was formed by 32 investors (our own Terry Biddle being one of them) to pursue this possibility and in February 2010 the company became the tenant on a 20 year free of all tie lease from Punch Taverns. They bought the fixtures and fittings, stock etc. from the holding company and continue to make substantial investments in the building, the stock, the staff and generally the future. In 2015 they acquired the freehold. This is our lunch stop, and is highly recommended for snacks, pot meals, or plated meals – all great value to go with a wonderful selection of ales.

The Hope has won CAMRA Sutton Pub of the Year 2009 and 2010, CAMRA Croydon & Sutton Pub of the Year 2012, 13 14, 15, and 16 and CAMRA Greater London Pub of the Year 2012, 2013 and 2016. They were the SPBW Pub of the Year 2016 and a finalist in the National Pub of the Year.

After lunch, we can move off to **The Railway Tavern** for one for the road if you feel so inclined, a Fullers "real local" pub with much railway memorabilia. Turn right out of The Hope and under the railway bridge turning right into Camden Road to the corner with North Street. There are the usual Fullers beers, and occasionally a guest. Finally, into North Street, under the bridge and turn right into Station Approach.

ALLOW PLENTY OF TIME TO GET TO THE UP PLATFORM.

A possible variant would be to omit The Greyhound, visit The Railway Tavern, and then go to The Hope. A bit more walking. Let's see!

Finally, many thanks to the licencees who will have opened early for us. Enjoy the trip!